

Những ánh sao đêm

Sáng tác : Phan Huỳnh Điểu

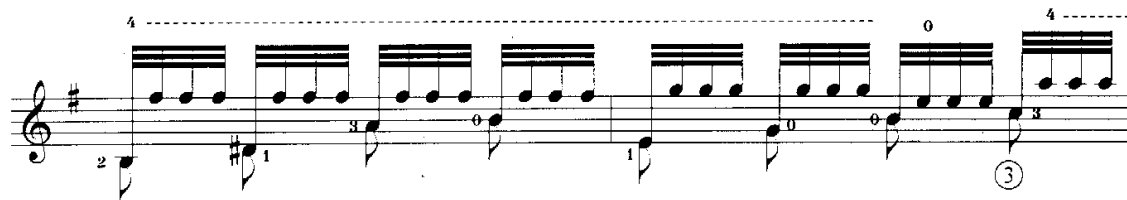
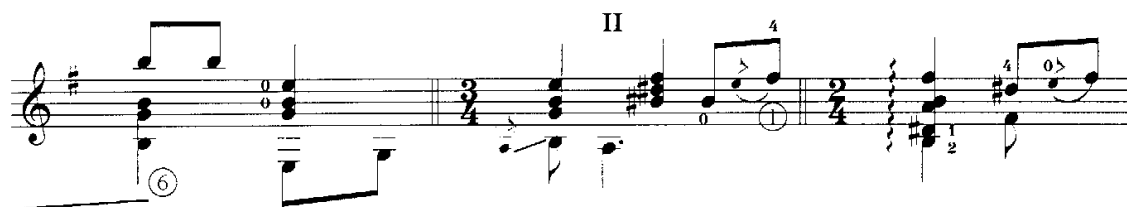
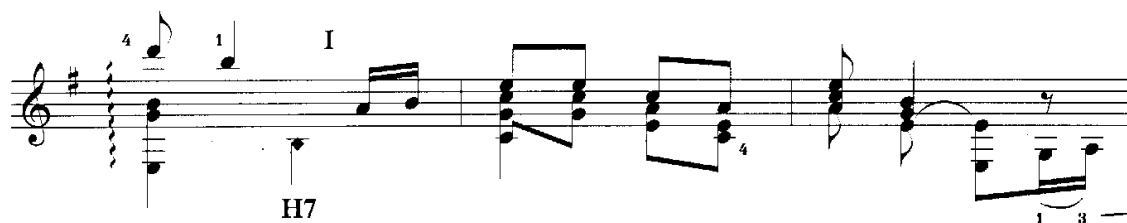
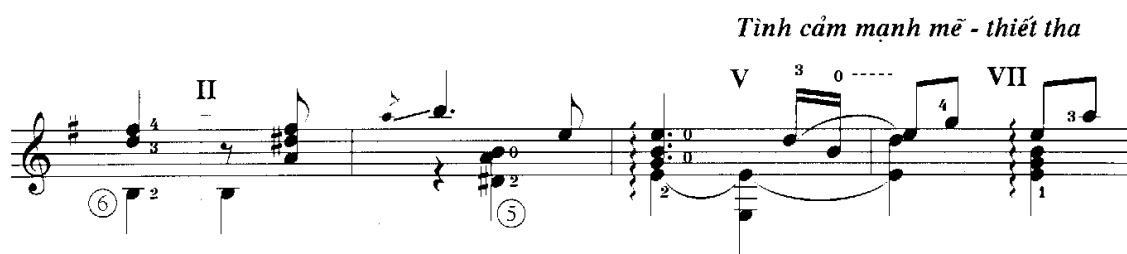
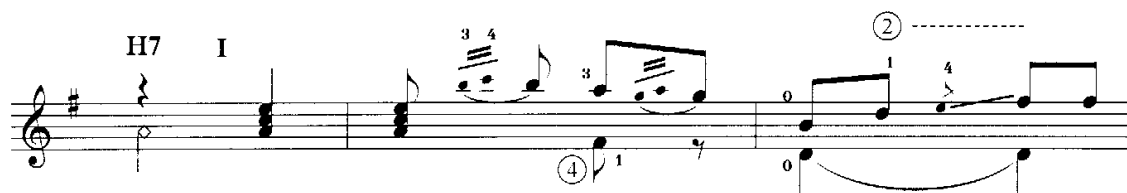
Chuyển soạn cho ghi-ta : Phạm Lợi

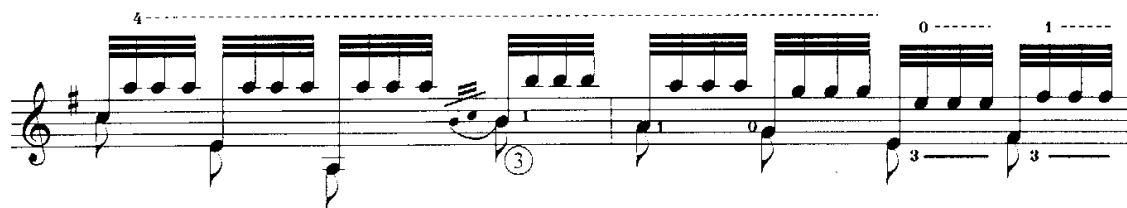
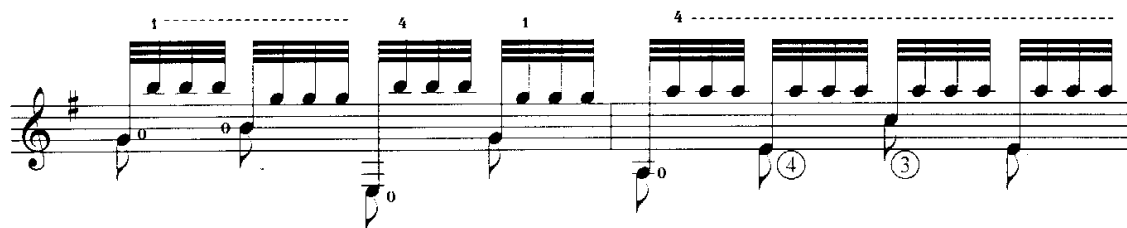
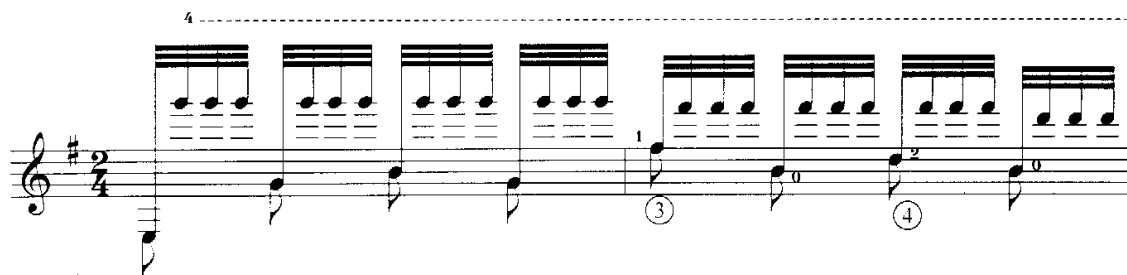
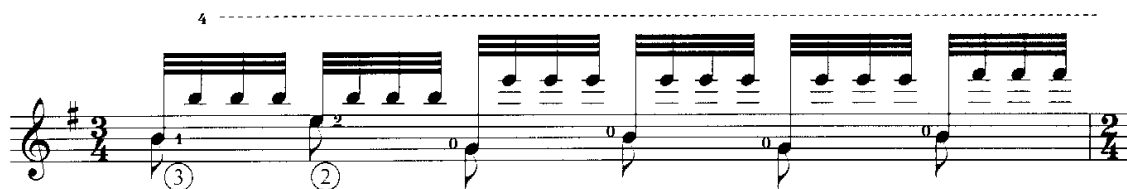
The guitar score is written on six staves. The first staff begins with a treble clef, a key signature of one sharp (F#), and a 2/4 time signature. It contains several measures of music, including a double bar line with a 'II' marking above it. The second staff continues the melody with various note values and rests. The third staff shows a change in rhythm and includes a '1' marking above a measure. The fourth staff features a 'II' marking at the beginning and an 'I' marking later, with a circled '3' above a measure. The fifth staff includes a 'IX' marking, a '0' below a measure, and an 'H12' marking above a measure. The sixth staff continues the piece with a '1' marking below a measure. The score concludes with a double bar line and a '2' marking below a measure.

VII
 VII II
 VII II
 IV
 II I I I
 II

6
 4
 4 2 0
 4
 3
 1 2 1 4
 a i m
 1 1
 2 0 1
 0 4

(chậm dần ... và dễ lắng...)





4

Để chậm và lắng ...

1 3 1 3 1 4 4

4 1 4 1 2 0 1 0

②

①

②

4

VII

3 4

II

I

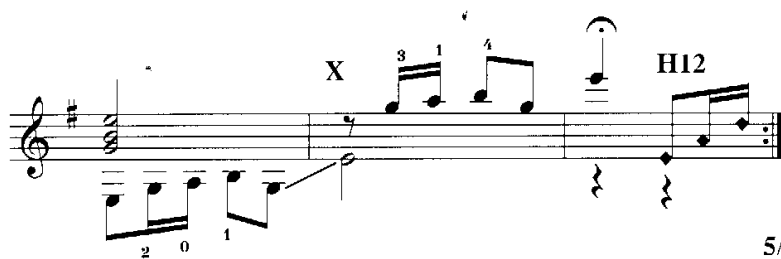
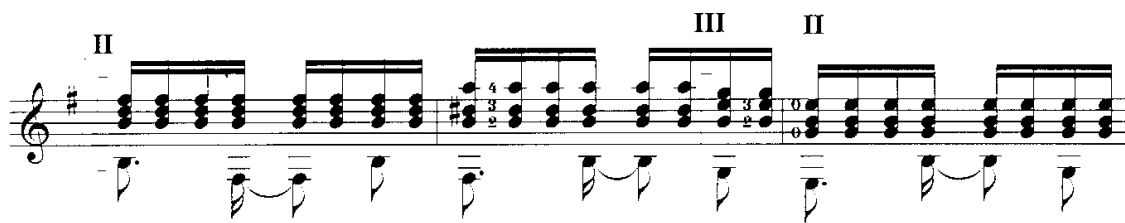
III

I

VIII

H12

0 3 4 2



5/96

AR.Phạm Lợi