

# NGÀY ĐÓ CHÚNG MÌNH

**NHẠC : PHẠM DUY**

**VÕ TÁ HÂN SOẠN CHO TÂY BAN CẦM**

## Andante

## Intro.

## C2

**6th = D**

 $mf$ 

*dim.*

## Theme 1

*mp* **a tempo**

mf

**C2.**

**Theme 2**

2/4

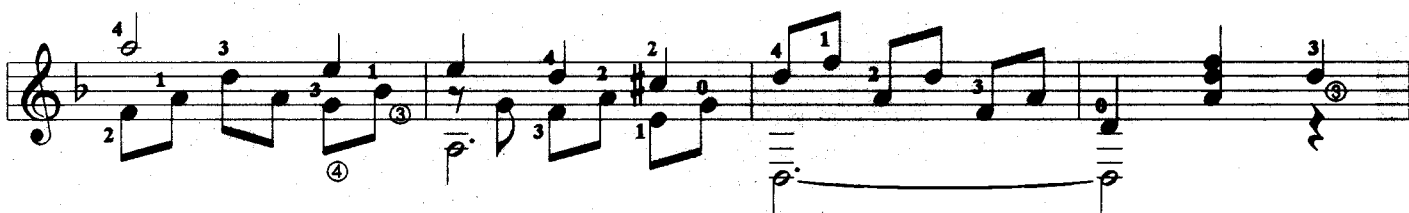
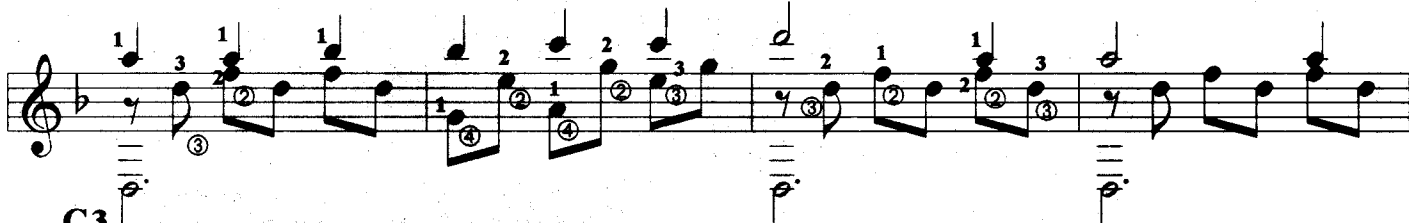
*dim.*

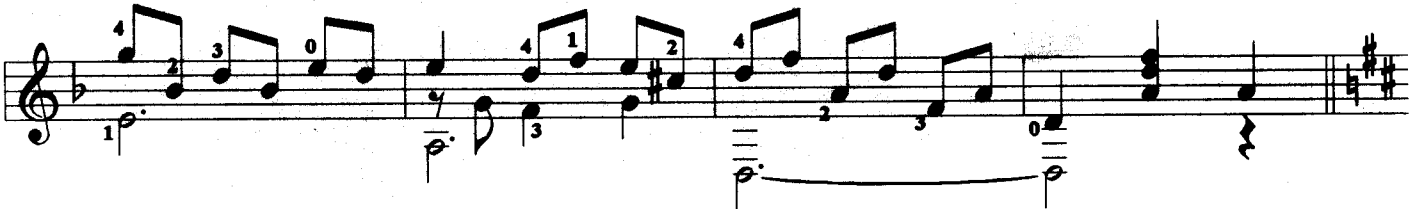
*pizz.*

*harm.*

*nat.*

The image displays three staves of musical notation for guitar, each featuring a key signature of two sharps (F# and C#) and a 4/4 time signature. The notation includes various chords and fingerings, with some measures containing multiple chords or complex fingerings indicated by numbers 1 through 5. The first staff shows a sequence of chords starting with a D major chord (F#4, C#5, G#4) and moving through several other chords. The second staff continues the sequence, and the third staff concludes with a final chord. The notation is clear and legible, with a focus on the fretting hand's position and fingerings.

**C2****Variation 2****C3****Variation 3****C3****C3****C1**



## Variation 4

**C2**

The 'C2' section of Variation 4 is presented in four systems. Each system is marked with 'C2' above the staff. The notation features complex rhythmic patterns with many beamed eighth and sixteenth notes. Fingerings (1-5) and a '0' are used throughout. The key signature remains two sharps. The section ends with a double bar line.

## Finale

The 'Finale' section is written across three systems. The first system contains a mix of eighth and sixteenth notes with fingerings. The second system includes some chords and rests, with fingerings like 1, 2, 3, 4, and 5. The third system features a series of beamed sixteenth notes, some with a '6' above them, and ends with a double bar line and a key signature change to two sharps.